



GAT MONTHLY MEMBERSHIP PROGRESS REPORT

Results as of: 9/30/2021

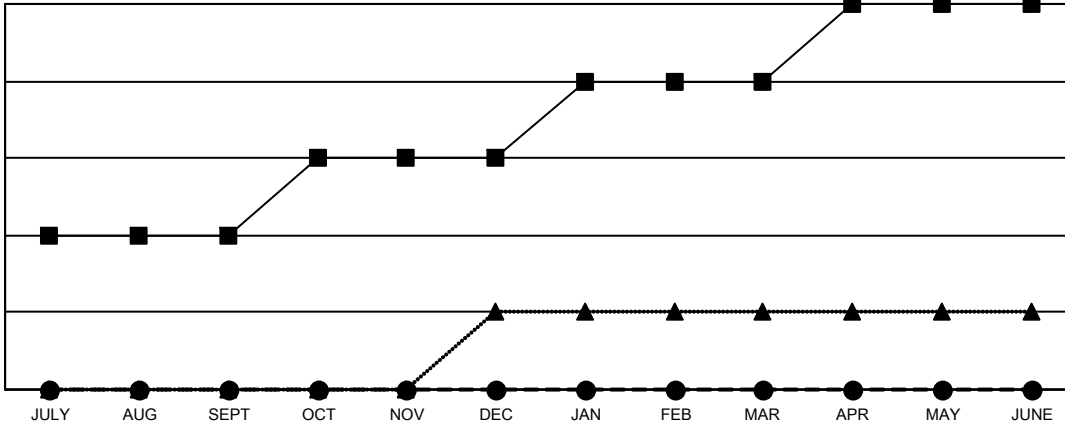
Multiple District 29

LOCATION: WEST VIRGINIA

| Clubs | | | |
|-----------------------|---------------|-----------|---------------|
| RESULTS FOR 2021-2022 | | | |
| QUARTER | NEW CLUB GOAL | NEW CLUBS | DROPPED CLUBS |
| JULY/AUG/SEPT | 2 | 0 | 1 |
| OCT/NOV/DEC | 1 | 0 | 0 |
| JAN/FEB/MAR | 1 | 0 | 0 |
| APR/MAY/JUNE | 1 | 0 | 0 |

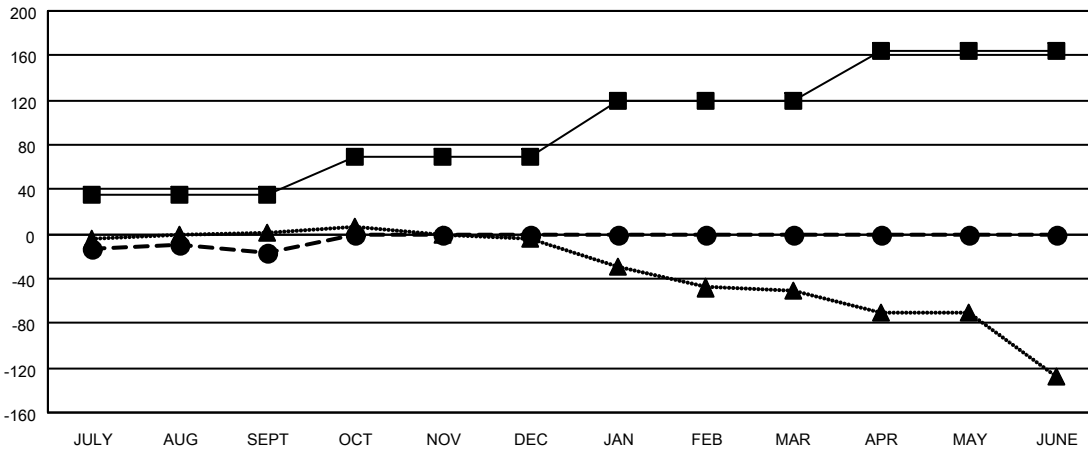
| Members | | | |
|-----------------------|------------------------|----------------------|--|
| RESULTS FOR 2021-2022 | | | |
| QUARTER | MEMBER GROWTH NET GOAL | MEMBER GROWTH ACTUAL | DROPPED MEMBERS ACTUAL (including transfers) |
| JULY/AUG/SEPT | 35 | 59 | 72 |
| OCT/NOV/DEC | 35 | 0 | 0 |
| JAN/FEB/MAR | 50 | 0 | 0 |
| APR/MAY/JUNE | 45 | 0 | 0 |

GOALS AND ACTUAL NEW CLUBS CUMULATIVE



- CURRENT YEAR GOALS FOR NEW CLUBS
- CURRENT YEAR ACTUAL NEW CLUBS
- ▲- LAST YEAR ACTUAL NEW CLUBS

GOALS AND ACTUAL MEMBERS CUMULATIVE



- MEMBER GROWTH NET GOAL
- MEMBER GROWTH ACTUAL
- ▲- LAST YEAR MEMBERSHIP ACTUAL

| | |
|------------------------|-----------|
| DROPPED CLUBS: 1 | |
| DROPPED MEMBERS | |
| DECEASED | 16 |
| CLUB CANCELLED | 0 |
| OTHER | 56 |
| TOTAL | 72 |

26 CLUBS OF 165 ADDED 1 OR MORE NEW MEMBERS

[CLICK HERE FOR CUMULATIVE MEMBERSHIP DATA](#)

| GENDER DISTRIBUTION | |
|----------------------------------|----------------|
| MALE | 2,360 (63.68%) |
| FEMALE | 1,346 (36.32%) |
| NON BINARY | 0 (0.00%) |
| PREFER NOT TO ANSWER | 0 (0.00%) |
| TOTAL FAMILY UNIT MEMBERS | 1,101 |
| FAMILY MEMBERS PAYING HALF DUES | 564 |